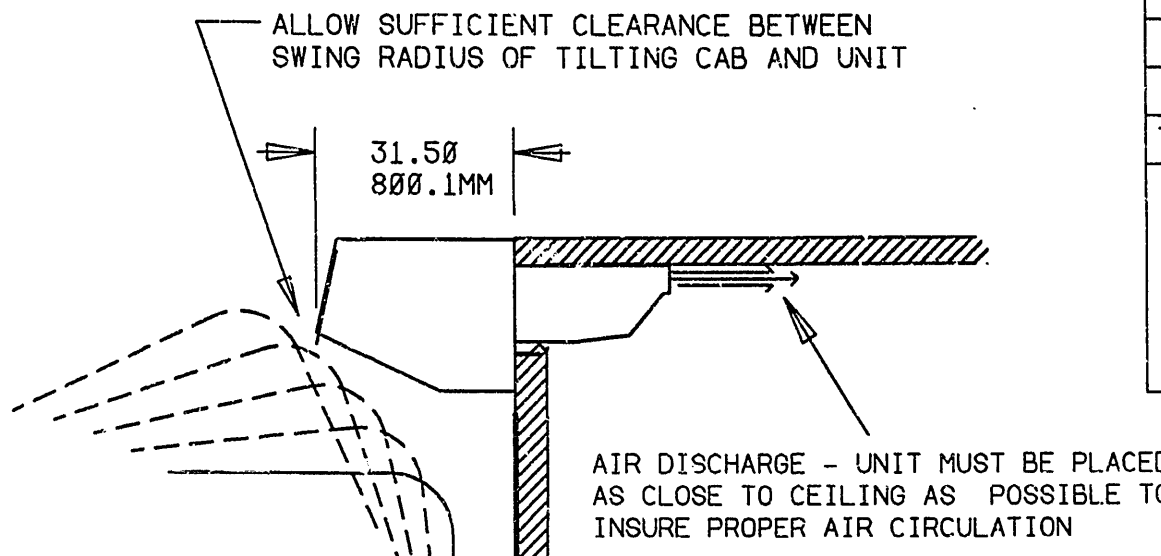
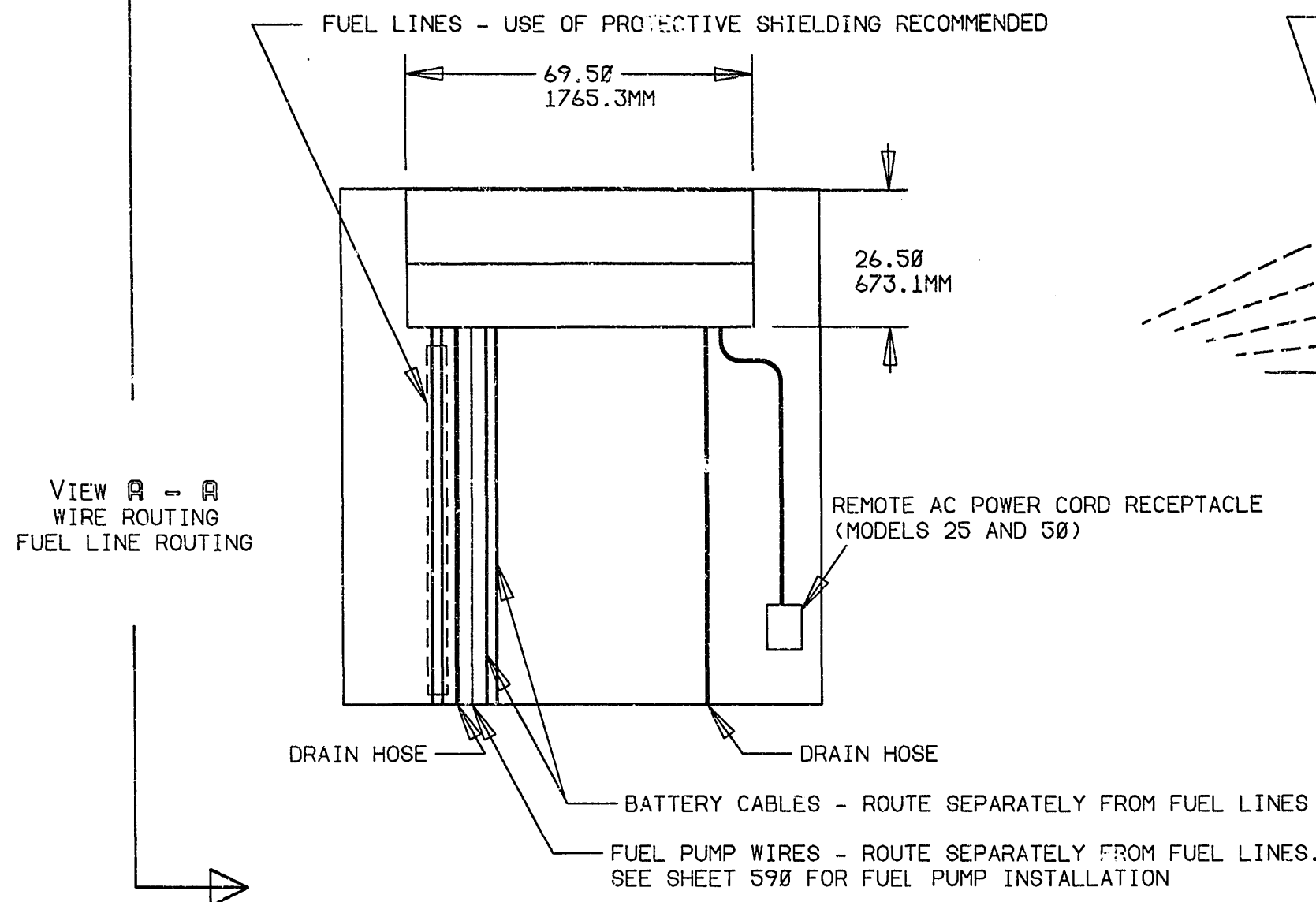
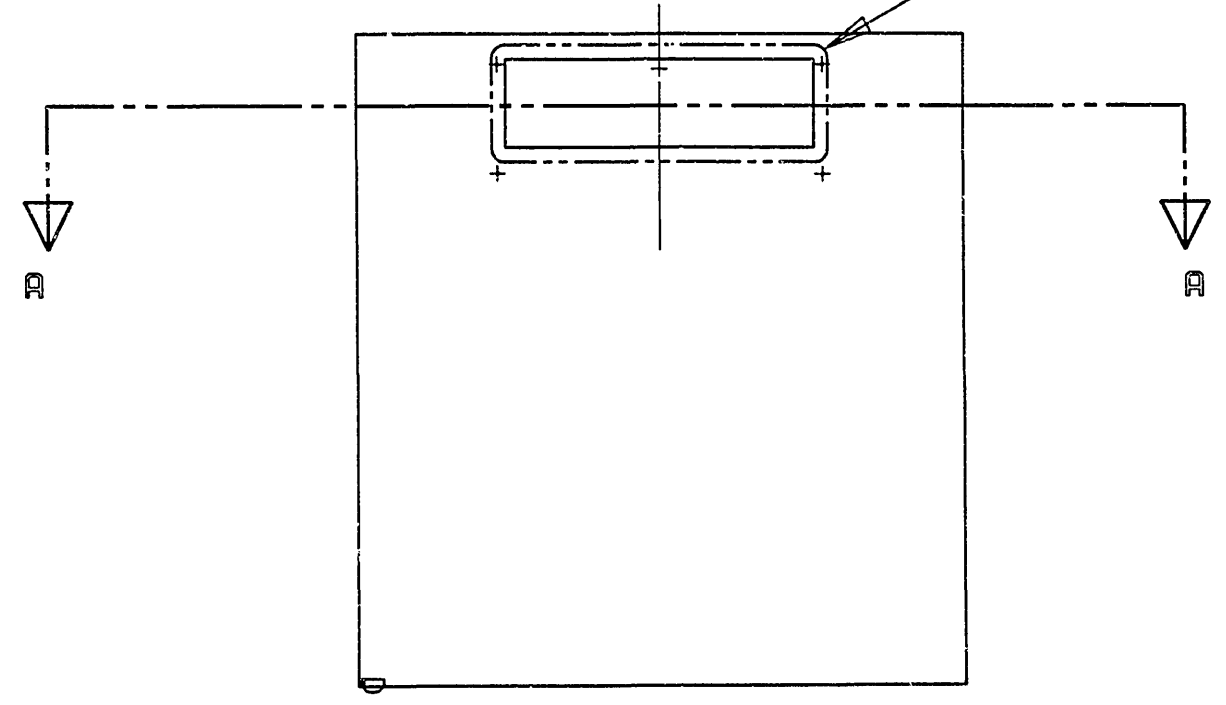


CHANGE ORDER	SYM	DESCRIPTION	DATE	BY	CH'D	APP
47683	A	RELEASED	XX.XX.XX	XXX	XX	XX
49150	B	GENERAL REV.	6/20/91	TB	TB	TB
72638	C	ADD XDS TO TITLE	12/9/97	RYA	RYA	JOM
74631	D	REMOVE FUSE LINK AND NEGATIVE FUEL PUMP WIRE. ADD CONNECTORS FOR 8 GA POSITIVE BATTERY WIRE AND FUEL PUMP HARNESS. SHOW POSITIVE BATTERY CABLE FOR XDS. CLEANED UP VIEW A-A WIRE ROUTING.	03-Jan-00	SRE	SRE	JK

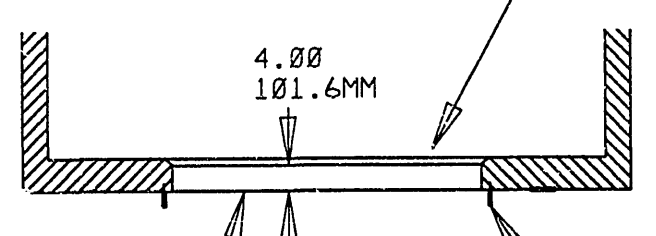


A GASKET SEALING SURFACE OF 2.00 - 50.0MM WIDE IS REQUIRED AROUND UNIT OPENING. THIS SURFACE MUST BE FLAT WITHIN .25 - 6.4MM IN ORDER THAT IT WILL PROPERLY INTERFACE WITH UNIT SEALING GASKET. THIS SURFACE MUST ALSO BE FREE OF ALL RIVETS OR BOLTHEADS.

SEE SHEET 356 FOR OPENING/MOUNTING OF UNIT

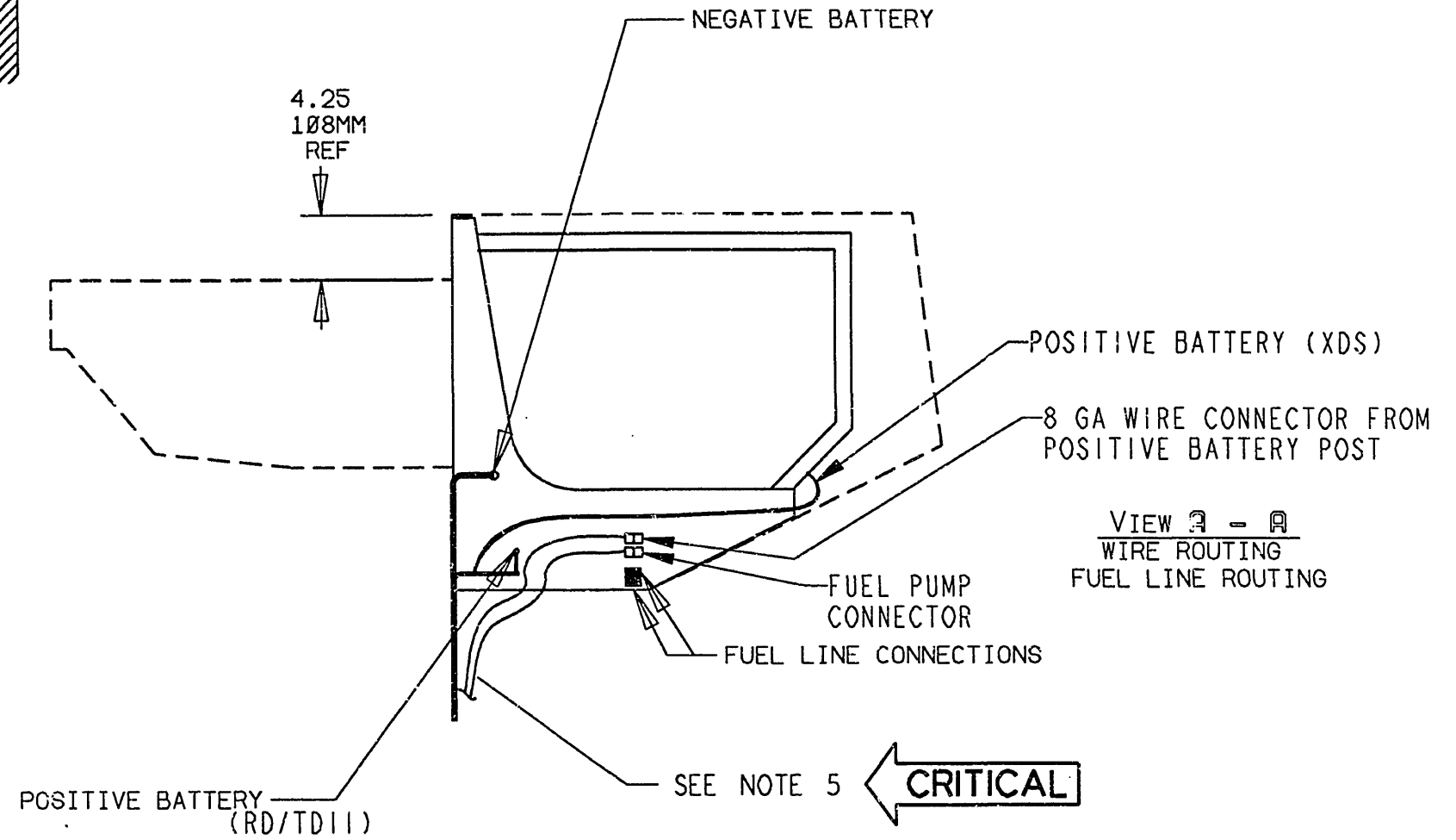


ALL TRUCKS WITH WALL SECTIONS OVER 4.00 - 101.6MM MUST BEVEL THE INSIDE OF THE OPENING ON SIDES AND BOTTOM TO INSURE AIR RETURN TO EVAPORATOR.



1/2-13 UNC 2B (4) ROLLED THREAD MOUNTING BOLTS TO PROTRUDE 2.50 - 64MM FULL THREAD BEYOND FRONT WALL. FURNISHED BY TRUCK MANUFACTURER. SEE NOTE 2

THERMAL BARRIER REQUIRED AROUND UNIT OPENING



- NOTES
- TRUCK FRONT WALL TO BE STRUCTURALLY STRONG ENOUGH TO SUPPORT WEIGHT OF REFRIGERATION UNIT. THIS INSTALLATION DWG SHOWS CERTAIN TRUCK STRUCTURAL DETAIL ONLY TO THE EXTENT THAT THEY RELATE TO MOUNTING THE THERMO KING UNIT. THESE DETAILS ARE NOT RECOMMENDATIONS NOR DO THEY CONVEY ENDORSEMENTS OR WARRANTY BY THERMO KING FOR THE STRUCTURAL INTEGRITY OF THE TRUCK DESIGN.
  - MOUNTING SPECIFICATIONS
    - BOLTS TO BE MADE FROM A MEDIUM CARBON STEEL WITH PROPERTIES EQUAL TO SAE GRADE 5
      - TENSILE STRENGTH 120000 PSI
      - HARDNESS RC 23-30
      - ZINC PLATE AND DICHROMATE FINISH .0002 MINIMUM THICKNESS
    - BOLTS TO BE SECURELY FASTENED IN THE TRUCK FRONT WALL IN SUCH A MANNER THAT THEY CAN WITHSTAND 60 FT/LBS OF TORQUE WHEN UNIT IS SECURELY FASTENED TO WALL.
    - INSTALLATION NOTE: 3/16 THICK PLATE STEEL WASHER PROVIDED IN INSTALLATION KIT MUST BE USED BETWEEN FRAME OF UNIT AND NUT MOUNTING THE UNIT TO FRONT WALL OF CARGO BODY. TORQUE NUTS TO 60 FT/LBS.
  - FUEL PUMP AND UNIT ELECTRICAL SYSTEM MUST BE THE SAME POLARITY AND VOLTAGE AS THE TRUCK OR UNIT.
  - UNIT FUEL LINES ARE NOT TO TAP INTO TRUCK FUEL LINES. SEE SHEET 590.
  - ENTRANCE/EXIT OF FUEL LINES AND BATTERY CABLES FROM UNIT TO BE PROTECTED FROM SHARP EDGES WITH GROMMET PROVIDED.

**CRITICAL**

FOR TOLERANCES NOT SPECIFIED SEE TKS09-109 TKS09-110	DRAWN ES	DATE 2-13-90	INSTALLATION DWG RD/TD II XDS	THERMO KING CORPORATION MINNEAPOLIS, MINNESOTA USA
LIMITS NOT ACCUMULATIVE OVER A CONTINUOUS LINE OF DIMENSIONS	CHECKED			
DESIGN DIMENSIONS ARE IN INCHES DIMENSIONS WITH MM AFTER THEM ARE MILLIMETER EQUIVALENTS	APPROVED		SHEET 1 OF 2	DRAWING NUMBER
FINISH N/A	APPROVED			9120C34
	THIS PRINT SUPERSEDES ANY OF EARLIER DATE DESTROY SAME		SCALE X	

4

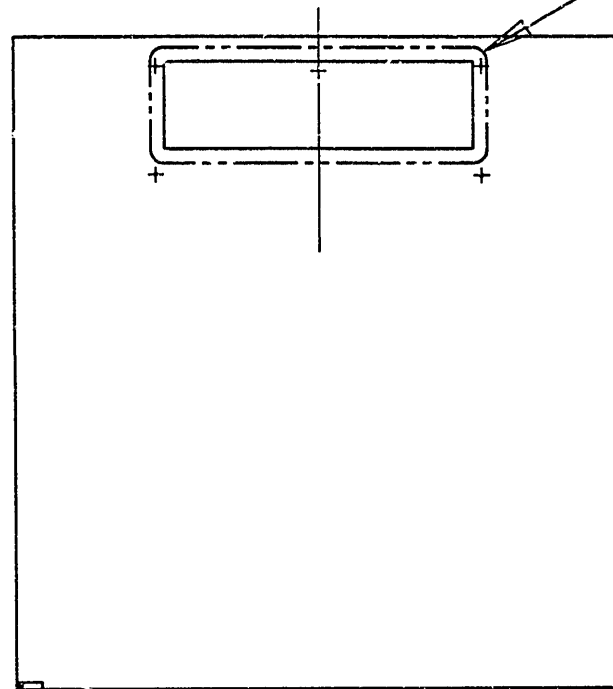
3

2

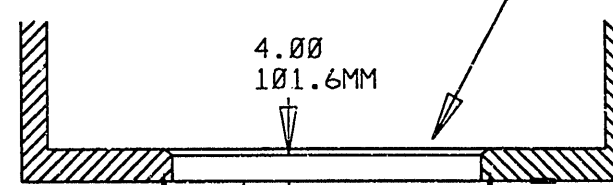
1

A GASKET SEALING SURFACE OF 2.00 - 50.0MM WIDE IS REQUIRED AROUND UNIT OPENING. THIS SURFACE MUST BE FLAT WITHIN .25 - 6.4MM IN ORDER THAT IT WILL PROPERLY INTERFACE WITH UNIT SEALING GASKET. THIS SURFACE MUST ALSO BE FREE OF ALL RIVETS OR BOLTHEADS.

SEE SHEET 356 FOR OPENING/MOUNTING OF UNIT

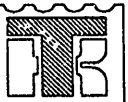


ALL TRUCKS WITH WALL SECTIONS OVER 4.00 - 101.6MM MUST BEVEL THE INSIDE OF THE OPENING ON SIDES AND BOTTOM TO INSURE AIR RETURN TO EVAPORATOR.



1/2-13 UNC 2B (4) ROLLED THREAD MOUNTING BOLTS TO PROTRUDE 2.50 - 64MM FULL THREAD BEYOND FRONT WALL. FURNISHED BY TRUCK MANUFACTURER. SEE NOTE 2

THERMAL BARRIER REQUIRED AROUND UNIT OPENING

G05	G04	G03	G02	G01	ITEM NO.	PART/DWG. NUMBER	REV.	DESCRIPTION	MATERIAL SPEC
					REV			LIST OF MATERIAL	
					DRAWN	MTN	DATE	INSTALLATION DWG RD/TD II XDS SHEET 2 OF 2	 <b>THERMO KING CORPORATION</b> MINNEAPOLIS, MINNESOTA USA
					CHECKED		09/12/86		
					APPROVED				
					APPROVED				
					LIMITS NOT ACCUMULATIVE OVER A CONTINUOUS LINE OF DIMENSIONS				
					DESIGN DIMENSIONS ARE IN INCHES DIMENSIONS IN ( ) ARE MILLIMETER EQUIVALENTS				
					FINISH				
					THIS PRINT SUPERSEDES ANY OF EARLIER DATE DESTROY SAME				
					N/A			SCALE 1:24	
								DRAWING NUMBER	REV
								9120C34	D

PROE\_C

4

3

2

1